




Silver Building
CONTRACTING EST.

A silhouette of a large construction crane is visible on the left side of the image, extending diagonally across the frame. The crane's lattice structure is clearly defined against the bright, cloudy sky. The sky is filled with soft, golden light from the setting or rising sun, which is partially visible in the upper right corner. The overall mood is contemplative and inspiring.

*“whatever good things we build
end up building us”*

OUR VISION

Our vision to become one of the world's top engineering, construction, and project management organization by achieving extraordinary results for our customers, building satisfying careers for our people, and earning a fair return on the value we deliver.

OUR MISSION

Our Mission is to form valuable long-term relationship with our clients and partners by delivering quality construction and engineering solutions and employing the best resources using latest techniques. We work with those who believe that uniqueness, durability and sustainability are essential elements in our community, now and for the generations who come after us.

VALUES

- Integrity and Fairness
- Provide quality materials, products and services
- Understand and deliver on customers' needs
- Create safe and healthy working environment
- Continuous learning and process improvement
- Promote Teamwork and reward employees on performance
- Create safe and healthy working environment

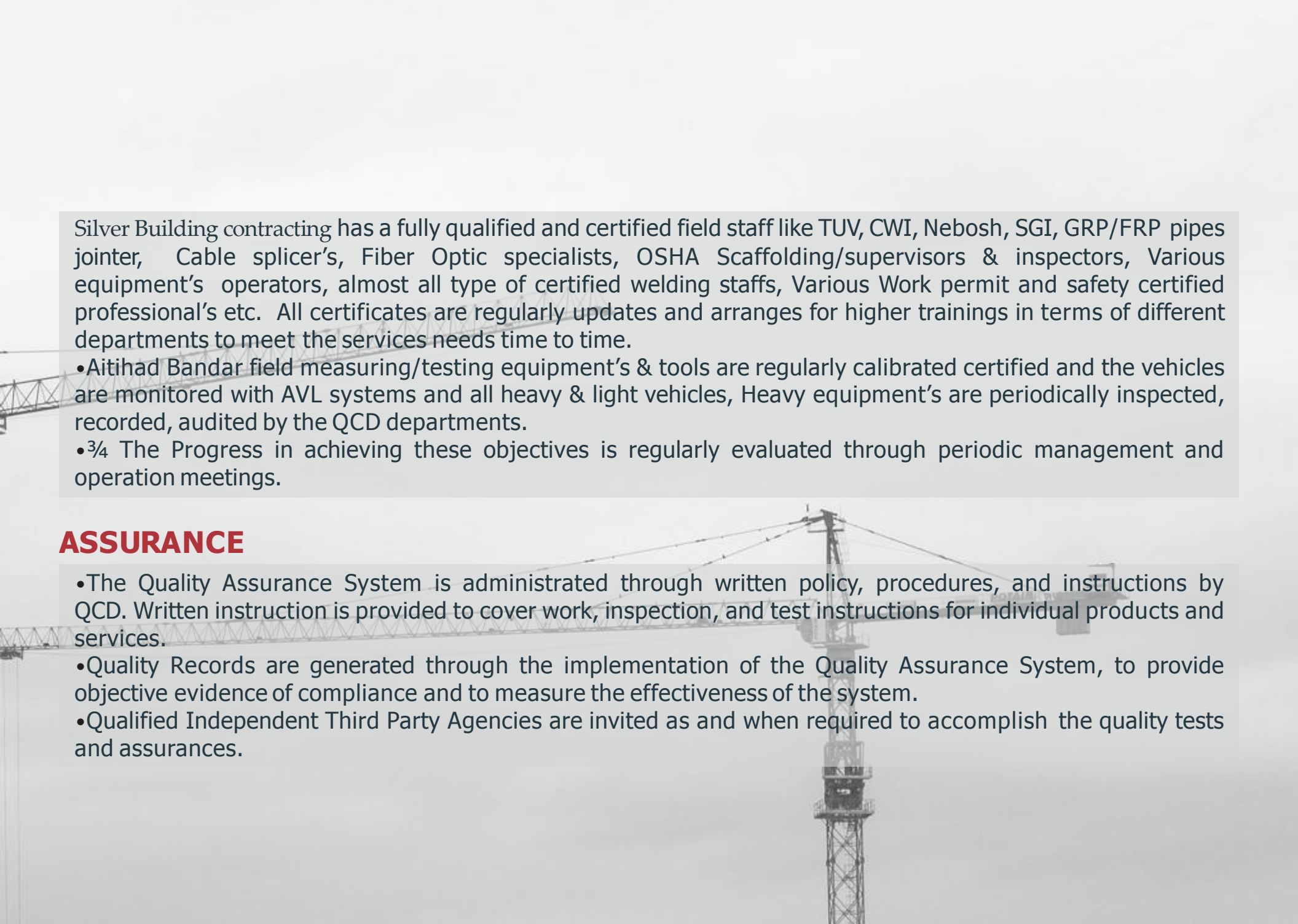
CONTENTS

1. ABOUT US
2. QUALITY CONTROL ASSURANCE
3. SAFETY LOSS PREVENTION
4. PERSONAL DEVELOPMENT AND SAUDIZATION POLICY
5. CAPABILITY
6. PIPELINE PROJECTS
7. SERVICES CIVIL WORK
8. ELECTRICAL WORK
9. INDUSTRIAL INSTRUMENTATION WORK
10. MECHANICAL WORK
11. OUR ASSOCIATED VENDORS
12. SAUDI PROJECTS
13. TRANSPORTATION AND LOGISTIC SERVICES
14. LIST OF EQUIPMENTS AND WELDING SOURCE
15. LIST OF ONGOING/COMPLETED PROJECT
16. APPRICIATION
17. REGISTRATION
18. CONTACT US

ABOUT US

Silver Building contracting in 2015, Together with our clients, we deliver landmark projects that create long term progress and economic growth. We are a PMC (Project Management Consultancy) having a vast array of expertise and experience in:-

- Airport Construction MEP an Interior Services
- Metro Underground, Elevated Stations, Tunnel Concreting & Interior Services
- Oil and Gas
- Hospital Constructions MEP and Interior Services
- Residential, Commercial, Hospitality Construction MEP & Interior Services
- Water and Sewage Treatment Plants
- Rural Electrification
- Energy Plants, Solar, Electrical Substations



Silver Building contracting has a fully qualified and certified field staff like TUV, CWI, Nebosh, SGI, GRP/FRP pipes jointer, Cable splicer's, Fiber Optic specialists, OSHA Scaffolding/supervisors & inspectors, Various equipment's operators, almost all type of certified welding staffs, Various Work permit and safety certified professional's etc. All certificates are regularly updates and arranges for higher trainings in terms of different departments to meet the services needs time to time.

- Aitihad Bandar field measuring/testing equipment's & tools are regularly calibrated certified and the vehicles are monitored with AVL systems and all heavy & light vehicles, Heavy equipment's are periodically inspected, recorded, audited by the QCD departments.

- $\frac{3}{4}$ The Progress in achieving these objectives is regularly evaluated through periodic management and operation meetings.

ASSURANCE

- The Quality Assurance System is administrated through written policy, procedures, and instructions by QCD. Written instruction is provided to cover work, inspection, and test instructions for individual products and services.

- Quality Records are generated through the implementation of the Quality Assurance System, to provide objective evidence of compliance and to measure the effectiveness of the system.

- Qualified Independent Third Party Agencies are invited as and when required to accomplish the quality tests and assurances.

03

SAFETY AND LOSS PREVENTION

SAFETY STATEMENT

The management of Silver Building contracting is committed to the protection of human resource and physical assets involved in its all ongoing operations and business activities, against human distress and financial loss resulting from accidental occurrences.

In fulfilling this commitment, the management shall provide and maintain a safe and hygienic working environment and protect the men, material and equipment against foreseeable hazards associated with the operations.

In this day to day activities all functions of the management will comply with the well define loss prevention programme of the company, which is complied in line with the Saudi Aramco.

Construction safety Manuel, Saudi Arabia Government rules and regulation, relevant industry safety standards and procedures as well as manufacture's instruction and procedures.

If any employee found any significant hazard will have the authority to stop work and inform the management.

Sub-Contractors will not be allowed on site to carry out work until the safety is checked and is satisfied according to safety Manuel.

The management's safety policy emphasizes the propaganda and practice knowledge of enhancement, skill development, positive attitude and total involvement of its employees of all levels in this control programmed.



SAFETY MANAGEMENT, LOSS PREVENTION & TRAININGS

Silver Building contracting recognizes the need to conduct and execute its on-site operation free from accidents, injuries, hazards, loss and damage to personnel or property of Zenith itself, its' clients and directly or indirectly involved third parties.

- Considerable resources, in terms of qualified personnel, required funds, time, etc. are allocated to the Safety Program.
- On each project, regular "Tool Box Meetings" are conducted by the concerned safety officers.
- Each project has a Dedicated Safety Officer who is responsible for recognizing and eliminating all dangerous and hazardous conditions.
- Corporate Safety and Loss Prevention Manager coordinates and directs the safety program through his staff and regular field inspections of the working conditions, PPE (Personal Protective Equipment), tools and equipment.
- Project Key ensures all its personnel including, major facilities, equipment, equipment operators and technicians-welders, cable splicers etc. are certified.
- These certifications are regularly updated and concerned personnel are put through training and then certified.
- HSE Department conducts several in house trainings, presentations and meetings to all categories of staffs periodically.

HEALTH & SAFETY ENVIRONMENT (HSE)

- HSE is given Higher Priority by Aitihad Bandar Management, and the Management is fully convinced that for achieving the world-class HSE standards, the leadership and the commitment from all the members of the organization is vital.
- Our goal is to have zero fatalities and no incidents that harm people or create an unsafe environment. Each employee is mandated to understand and adapt to the organizational safety culture and to put into practice the individual safety responsibilities.
- The HSE Policy enunciated by the management emphasis on Health, Safety and Environment through structured effort and well defined HSE organization.

04

PERSONNEL DEVELOPMENT AND SAUDIZATION POLICY

PERSONAL DEVELOPMENT

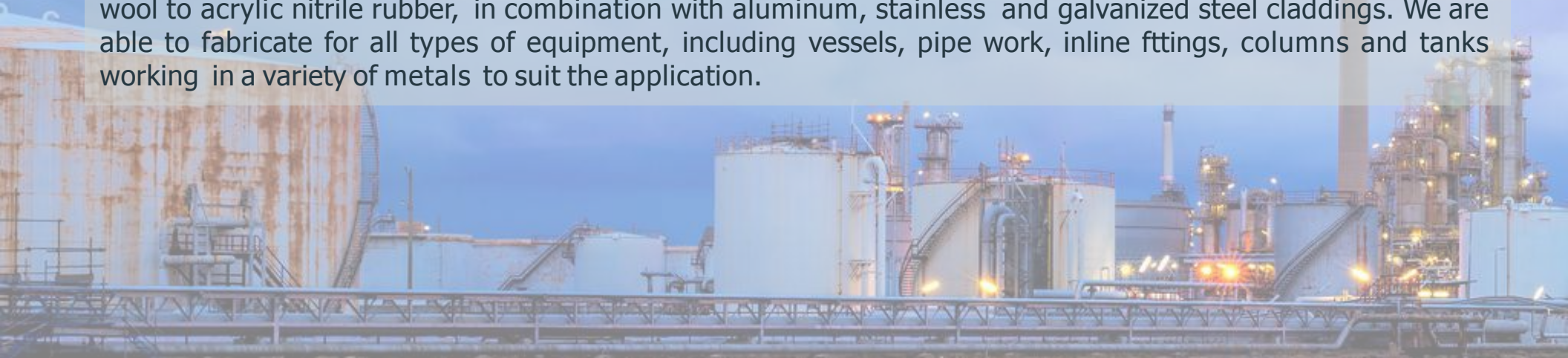
Silver Building contracting recognizes that a well-trained, professional and experienced staff is critical for any professional company's sustenance and growth. Hence, Aitihad Bandar has developed a personnel development policy. All existing certifications are kept current by renewals and / or training and re-certification of the employees as a policy matter.

- Top performing employees are selected based on the annual appraisals in their respective fields of expertise. The selected employees are sent for profession training programs and certified in their respective fields- if applicable.
- In order to retain this skilled workforce, a professional and conducive environment is provided at work and various activities are carried out at our camps including inter- company sports programs.

06

PIPELINE PROJECTS

- Civil Works: Excavation, Backfilling, Site Preparation, Asphaltting & Construction of Pipeline right of way, Construction of equipment foundations, fencing, Berming and gates.
- Structural Works: Construction of buildings, high rise towers, hospitals, recreation centers, sports complex.
- Mechanical & Piping: Gas & Oil and Water Pipeline, Trunkline and Flowlines, Well Head Piping, Piping Fabrication & Erection with all accessories and valves, Storage Tanks Repair & overhauling, Equipment overhauling, Hydro-testing, Valve testing, Piping Reinstatement, Bolt Tightening.
- HVAC Fabrication & Erection Services: Perform skilled mechanical maintenance duties in the inspection, repair, installation and alteration of District heating, ventilation, air conditioning and refrigeration systems and related equipment and facilities; perform preventive maintenance and routine servicing of equipment and fabrication and installation of complete ducting works.
- Fire Fighting Installation Services: Installation and maintenance of CO2 system, dry chemical system, water spray system, clean agent system, sprinkler system, water spray system, foam system, hydrant system
- Industrial Insulation & Cladding Services: We work with a range of thermal insulation materials, from mineral wool to acrylic nitrile rubber, in combination with aluminum, stainless and galvanized steel claddings. We are able to fabricate for all types of equipment, including vessels, pipe work, inline fittings, columns and tanks working in a variety of metals to suit the application.

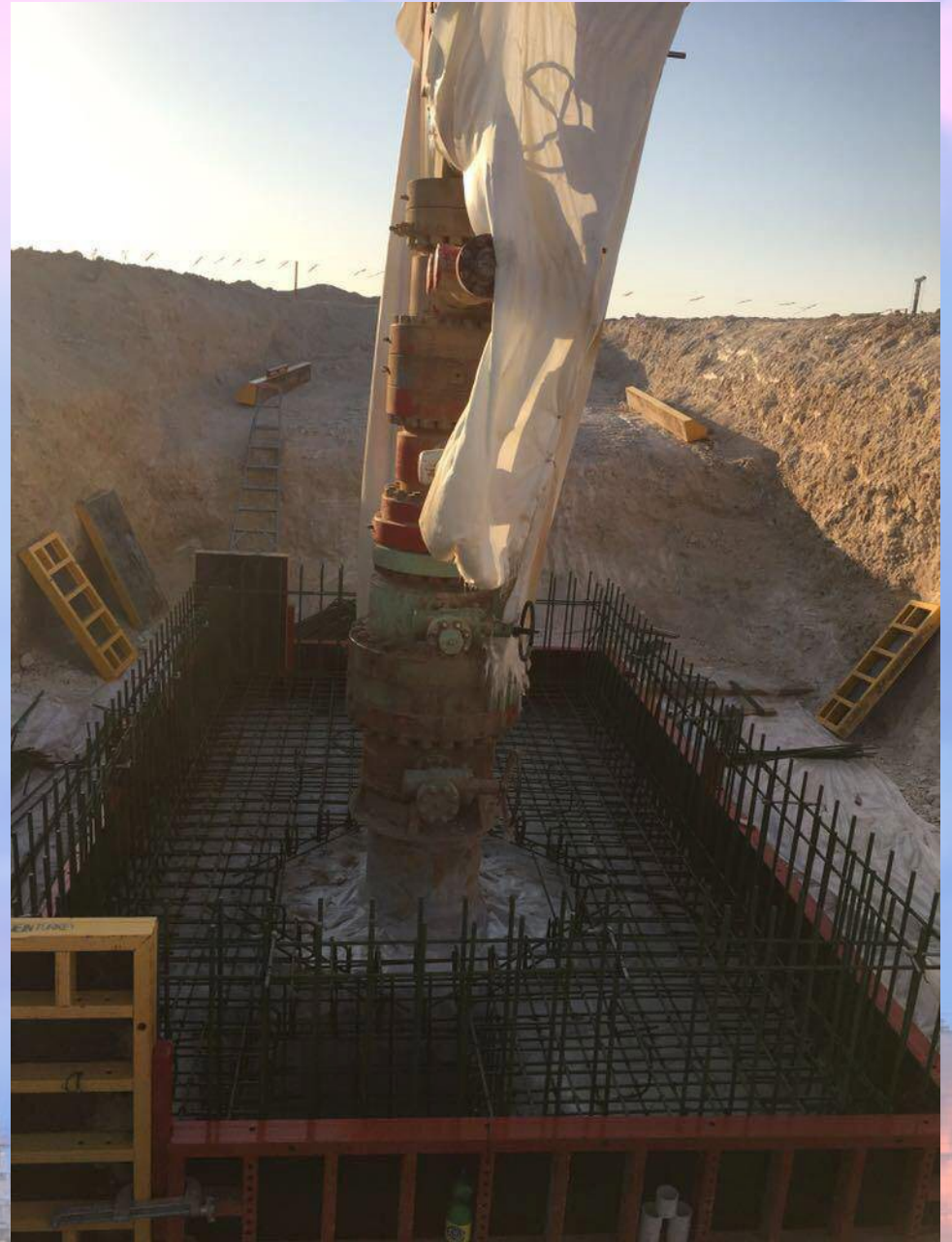


05

CAPABILITY

Silver Building contracting is capable of performing Short Form Contracts (SFC), Mid Form Contracts (MFC), And Long Form Contracts (LFC) and Unit Rate Contracts.

- EPC (Engineering, Procurement & Construction): Aitihad Bandar has tie-ups when required, and has a well-developed network with reputed; Saudi Aramco approved Independent Design and Engineering Companies and Organizations.
- Testing & Commissioning: Project Key has a vast array of calibrated testing instruments and equipment like Digital Voltmeter (DVM's), meggars, earth testers, DFT gauges, hydro-test pumps and manifolds, and Various Instruments calibration & Testing meters, Etc.
- Certified personnel including, but not limited to cable splicers, welders, fabricators, equipment operators, sand-blasters and painters augment our resources.
- In addition to Aitihad Bandar certified instruments and technicians, Aitihad Bandar has a well-developed network of well-reputed independent inspection and testing labs and companies.
- Project Key enjoys support of various Saudi and foreign banks for the purposes of project financing, other facilities like L/C's for importing of materials and equipment etc.



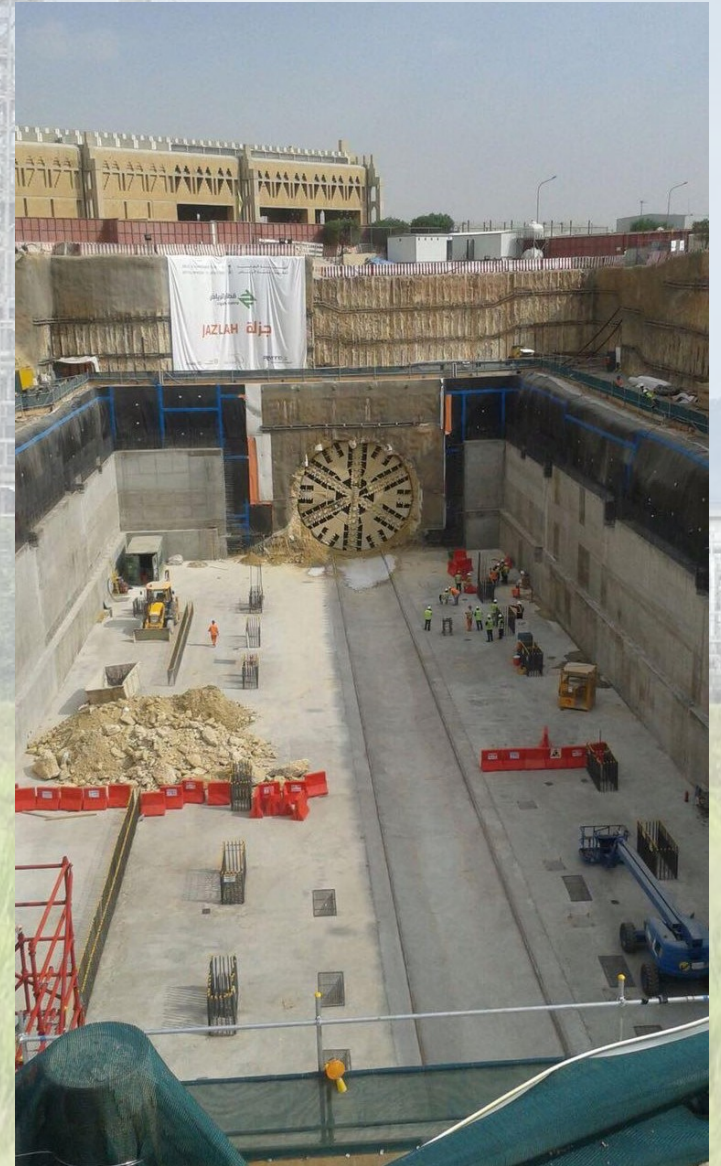
- 
- **Painting & Coating Activities:** Painting and Coating of all industrial structures, equipments, piping and piping accessories without any limitation as per approved procedures and standards.
 - **E&I Activities:** All Cable and Cable tray activities, Panels (Power, Lighting, Control) installation, termination and pre-commissioning /testing & commissioning activities, control valves ,Fire Alarm & Fire Detection System, Cathodic Protection system ,LDS, Substation.
 - **Testing & Commissioning:** Project Key has a vast array of calibrated testing instruments and equipment like Digital Voltmeter (DVM's), meggars, earth testers, DFT gauges, hydro-test pumps and manifolds, and Various Instruments calibration & Testing meters, Etc.
 - **Certified personnel** including, but not limited to cable splicers, welders, fabricators, equipment operators, sand-blasters and painters augment our resources.
 - **In addition** to Project Key certified instruments and technicians, Project Key has a well-developed network of well-reputed independent inspection and testing labs and companies.
 - **Project Key** enjoys support of various Saudi and foreign bank s for the purposes of project financing, other facilities like L/C's for importing of materials and equipment etc.



07

SERVICES: CIVIL WORKS

- EXCAVATION, BACKFILLING, SITE PREPARATION, ASPHALTING & CONSTRUCTION OF PIPELINE RIGHT OF WAY, CONSTRUCTION OF EQUIPMENT FOUNDATIONS, FENCING, BERMING AND GATES
- CONSTRUCTION OF BUILDINGS (INDUSTRIAL & COMMERCIAL)
- INDUSTRIAL BUILDINGS
- CIVIL STRUCTURES
- SMALL & MEDIUM BUILDINGS (LSTK)
- CONCRETE DUCT BANKS
- FOUNDATIONS
- CONCRETE REPAIRS
- COMBINED CAPABILITY OF EACH DIVISION ALLOWS US TO EXECUTE EFFECTIVELY.
- TOTAL PLANTS ON A TURN-KEY BASIS
- EXPANSION OF INDUSTRIAL UNITS
- UP-GRADATION OF TECHNOLOGY
- DE-BOTTLENECKING PROJECTS
- MAINTENANCE CONTRACTS
- CONSTRUCTION OF BUILDINGS (INDUSTRIAL & COMMERCIAL)
- INDOOR TYPE SUBSTATIONS ON A LSTK



- **OUTDOOR TYPE SUBSTATIONS ON A LSTK BASIS**

- **PRE-ENGINEERED BUILDING WITH COMPLETE UTILITIES SUCH AS:**

HVAC

FIRE PROTECTION/FIRE ALARM SYSTEMS

SPRINKLER SYSTEMS

FURNISHINGS

- **INDUSTRIAL BUILDINGS WITH UTILITIES SUCH AS:**

OIL / WATER SEPARATION PLANT

COMPRESSED AIR

SEWERAGE TREATMENT PLANTS

GOSP (GAS OIL SEPARATION PLANT)

- **ELECTRICAL SUBSTATIONS:**

SUBSTATION BUILDING COMPLETE WITH ALL UTILITIES LIKE OUTDOOR SUBSTATION YARD

TRANSFORMERS FOUNDATIONS, CABLE TRENCHES, DYKE WALLS, DUCT BANKS, FIRE WALLS, CABLE BASEMENT, AND FENCING WORKS.

- **ARCHITECTURAL:**

GYPSUM BOARD PARTITIONS, CEILING, HANDRAILS, RAISED FLOORS, CLADDINGS, RAMPS, HOLLOW METAL DOORS, SECURITY DOORS, SLIDING DOORS.

- **FINISHING'S:**

PAINTING, FLOOR FINISHING, EPOXY COATINGS, SELF-LEVEL FLOORING, CERAMIC WALL & FLOOR TILES, CARPET TILES.

08

SERVICES: ELECTRICAL WORK

- **ELECTRICAL SUBSTATIONS (13.8KV TO 230KV)**
- **MCC'S, SWITCH BOARDS & PANELS**
- **TRANSFORMER & SWITCHGEAR ERECTION & MAINTENANCE**
- **GENERATOR SETS, EMERGENCY POWER, UPS**
- **CABLE LAYING**
- **MARINE CABLE TESTING AND TERMINATION**
- **CATHODIC PROTECTIONS (IMPRESSED CURRENT AND SACRIFICIAL ANODE SYSTEM)**
- **INDUSTRIAL ELECTRIFICATION**
- **ELECTRONIC WEIGH BRIDGES FOR BULK WEIGHING**
- **BUS DUCTS**
- **INDUSTRIAL PLANT ILLUMINATION CABLE DUCT BANKS**
- **CABLE TRAYS AND CABLE LADDERS**
- **STRUCTURAL FABRICATION**
- **H.V. CABLE TESTING AND TERMINATIONS**
- **M C C PANEL INSTALLATION, TESTING AND COMMISSIONING.**
- **H.V. SWITCH BOARDS AND PANELS**

- **BUS DUCTS**
- **MARINE CABLE TESTING AND TERMINATION**
- **SUPPLY, INSTALLATION AND TESTING OF:**
 - GENERATOR SETS
 - EMERGENCY POWER
 - AC AND DC DISTRIBUTION PANELS
 - UPS
- **LIGHTING – INDOOR AND OUTDOOR, INCLUDES:**
 - INDUSTRIAL PLANT ILLUMINATION
 - FENCE LIGHTING
 - FLOOD LIGHTING
 - SECURITY LIGHTING
- **CATHODIC PROTECTION (IMPRESSED CURRENT AND SACRIFICIAL ANODE SYSTEM)**



09

SERVICES: INDUSTRIAL INSTRUMENTATION WORKS

INDUSTRIAL INSTRUMENTATION

CHEMICAL PLANT

WATER DESALINATION PLANT

SEWAGE PLANT

CEMENT PLANT

ELECTRONIC INSTRUMENTS

PLC DCS BMS

DESIGN & SUPPLY CONSTRUCT TURBINE

SUPERVISORY INSTRUMENTS (TSI)

SYSTEM OR REVAMPING

DESIGN AND INSTALL OR UPGRADE VIBRATION

MONITORING FOR ROTATING MACHINES

WE ARE OFFERING OUR SERVICES TO:

PETROCHEMICAL PLANTS

OIL REFINERIES

STEEL MILS

CEMENT PLANTS

POWER & DESALINATION PLANTS

MISCELLANEOUS OTHER INDUSTRIES



10

SERVICES: MECHANICAL WORK

- **GAS & OIL AND WATER PIPELINE, TRUNKLINE AND FLOWLINES, WELL HEAD PIPING ,PIPING FABRICATION & ERECTION WITH ALL ACCESSORIES AND VALVES, STORAGE TANKS REPAIR & OVERHAULING, EQUIPMENT OVERHAULING, HYDRO-TESTING, VALVE TESTING, PIPING REINSTATEMENT, BOLT TIGHTENING.**
- **FABRICATION, ERECTION, AND MODIFICATION OF CARBON STEEL, STAINLESS STEEL & ALLOY PIPING NETWORKS FOR:**
 - WATER LINES
 - SEWER LINES
 - FUEL LINES
 - HYDROCARBON LINES
 - BREATHABLE AIR LINES
- **LINES , HYDROCARBON LINES , AIR LINES ETC.**
- **STRUCTURAL: PIPE RACKS, PLATFORM, SKIDS FABRICATION AND INSTALLATIONS**
- **PRE-ENGINEERED BUILDINGS WITH COMPLETE UTILITIES, INCLUDING HVAC, FIRE PROTECTION / SUPPRESSION**
- **INDUSTRIAL BUILDINGS WITH UTILITIES SUCH AS OIL/WATER SEPARATION SYSTEMS,**
- **COMPRESSED AIR AND BREATHABLE AIR SYSTEMS**
- **GAS METERING STATIONS**
- **INDUSTRIAL PAINTING**
- **SPACE FRAMES ERECTION**
- **ERECTION OF INDUSTRIAL PLANT AND MACHINERY**
- **SPECIALTY CONSTRUCTION AND INSTALLATIONS**



MAINTENANCE AND SHUTDOWN ACTIVITIES CONSISTING OF:

PIPING MODIFICATION
VALVES REPLACEMENT
REPAIR AND MODIFICATION OF STATIONARY
EQUIPMENT
DESIGN & CONSTRUCTUR
INE SUPERVISORY INSTRUMENTS (TSI) SYSTEM
DESIGN AND INSTALLATION OR UPGRADE OF
VIBRATION MONITORING FOR ROTATING MACHINES

FABRICATION, ERECTION AND MODIFICATION OF:

LIGHT, MEDIUM AND HEAVY STEEL STRUCTURES
INCLUDING CRANE GIRDERS

FABRICATION AND ERECTION OF:

DUCTS
CHUTES
HOPPERS / SILOS

• ERECTION OF EQUIPMENT SUCH AS:

OVERHEAD CRANES
WEIGH-BRIDGES
VESSELS
STORAGE TANKS
SILOS
MISCELLANEOUS STATIONARY EQUIPMENT

•GENERAL STRUCTURAL FABRICATION AND INSTALLATIONS

- **SPACE FRAMES ERECTION**
- **ERECTION OF INDUSTRIAL PLANT AND MACHINERY**
- **GAS METERING SKIDS**
- **COMPANY PROFILE**
- **INDUSTRIAL PAINTING**
- **SPECIALTY CONSTRUCTION AND INSTALLATIONS**
- **TURBINE SUPERVISORY INSTRUMENTS (TSI) SYSTEM**



• **VIBRATION MONITORING FOR ROTATING MACHINES**

• **WELDING TECHNOLOGY:**

-

ARC WELDING

SUBMERGE-WELDING

CO2 WELDING

GAS SHIELD WELDING

(SEMI-)AUTO WELDING

UPHILL/DOWNHILL WELDING

WELDING FOR NARROW SPACE

• WITH THE CAPACITY OF INSTALLATION PRESSURE PIPELINE/VESSEL, WELDING TECHNOLOGY CAN BE USED FOR FSF, FPF, CPF, LONG-DISTANCE PIPELINE, WATER INJECTION FACILITIES, AND STEAM INJECTION FACILITIES, ETC. UNDER ANY KIND OF CONDITION/AREA, SUCH AS FLAMMABLE, XPLOSIVE, HIGH TEMPERATURE, LOW TEMPERATURE, HIGH PRESSURE AND EXTREME

COLD CONDITIONS, AND DESERT, SWAMP, RIVER/LAKE, HILL & MOUNTAIN AREAS.

• NDT INSPECTION INCLUDING X -RAY, Y-RAY ULTRASONIC, MAGNETIC, PENETRATION, AND AUTO X-RAY CRAWLER USED FOR PIPE INTERNAL INSPECTION.

-

• **FIRE PROTECTION:**

- SPRINKLER SYSTEMS

- WET GAS SYSTEMS

- FM-200

- CO2 SYSTEMS

- FIRE ALARM SYSTEMS (ADDRESSABLE & CONVENTIONAL)



11

OUR ASSOCIATED VENDORS



TECNICAS REUNIDAS

They are an international general contractor, engaging in the engineering, design and construction of various types of industrial facilities for a broad spectrum of customers throughout the world, including many of the principal national oil companies as well as several multinational companies.

They are the leader for engineering and construction in the oil and gas sector in Spain, one of the leaders in Europe in the design and construction of oil and gas facilities, and one of the world leaders in the refining sector.

Most of their business is concentrated on large turnkey industrial projects, although they also provide engineering, management, start-up and operating services for industrial plants.



RIYADH METRO SERVICES



12 SAUDI PROJECTS

3F1 Deep Under Ground Station (Near Saudi Railway Organisation, Riyadh)
Planning, Estimation, Quality and Quantity verification, Fixing Steel Reinforcement, Masonary and Formwork Installation, Placing Concrete and erecting false work and shuttering of Base Slab, Mazenine wall, Concourse walls, technical slab Retaining Walls, Columns, Capping Beam and Pits.

Length 90 meters
width 36 meters
depth 32 meters

ANM Precast Yard - West Depot (On Makkah Road, Riyadh)

Planning, Estimation, Quality and Quantity verification, Fixing Steel Reinforcement, Masonary and Formwork Installation, Placing Concrete and erecting false work and shuttering of Precast Segments - Piers, Precast Template, Match-Cast "Perfect-Fit Joint", Match-Cast Pier Segments, Precast Inverted T-Cap, Pretensioned or Post-Tensioned.

3E6 Deep Under Ground Station (Near Saudi Railway Organisation, Riyadh)
Planning, Estimation, Quality and Quantity verification, Fixing Steel Reinforcement, Masonary and Formwork Installation, Placing Concrete and erecting false work and shuttering of Base Slab, Mazenine wall, Concourse walls, technical slab, Internal & Retaining Walls, Columns, Capping Beam and Pits.

Length 150 meters
width 26 meters
depth 31.5 meters

3E5 Deep Under Ground Station (Near Sanniyah Gadeem, Madina Munawara Road, Riyadh)

Planning, Estimation, Quality and Quantity verification, Fixing Steel Reinforcement, Masonary and Formwork Installation, Placing Concrete and erecting false work and shuttering of Base Slab, Mazenine wall, Concourse walls, technical slab, Internal & Retaining Walls, Columns, Capping Beam and Pits.

Length 150 meters
width 26 meters
depth 32 meters

3E3 Deep Under Ground Station (Near Sanniyah Gadeem, Madina Munawara Road, Riyadh)

Planning, Estimation, Quality and Quantity verification, Fixing Steel Reinforcement, Masonary and Formwork Installation, Placing Concrete and erecting false work and shuttering of Base Slab, Mazenine wall, Concourse walls, technical slab, Internal & Retaining Walls, Columns, Capping Beam and Pits.

Length 150 meters
width 26 meters
depth 32 meters

3E1 - 3D1, Ramp Area, Tunnel Boring Machine Dismantling area, (Near Sanniyah Gadeem, Madina Munawara Road, Riyadh)

Planning, Estimation, Quality and Quantity verification, Fixing Steel Reinforcement, Masonary and Formwork Installation, Placing Concrete and erecting false work and shuttering of Platform Slab, Retaining Walls, Columns, Capping Beam.

length 350 meters
width 17 meters
depth 25 meters

3H1 Station - Shallow Station (Near Sanniyah Gadeem, Madina Munawara Road, Riyadh)

Planning, Estimation, Quality and Quantity verification, Fixing Steel Reinforcement, Masonary and Formwork Installation, Placing Concrete and erecting false work and shuttering of Base Slab, Mazenine wall, Concourse walls, technical slab, Internal & Retaining Walls, Columns, Capping Beam and Pits.

Length 266 meters
width 20 meters
depth 22 meters

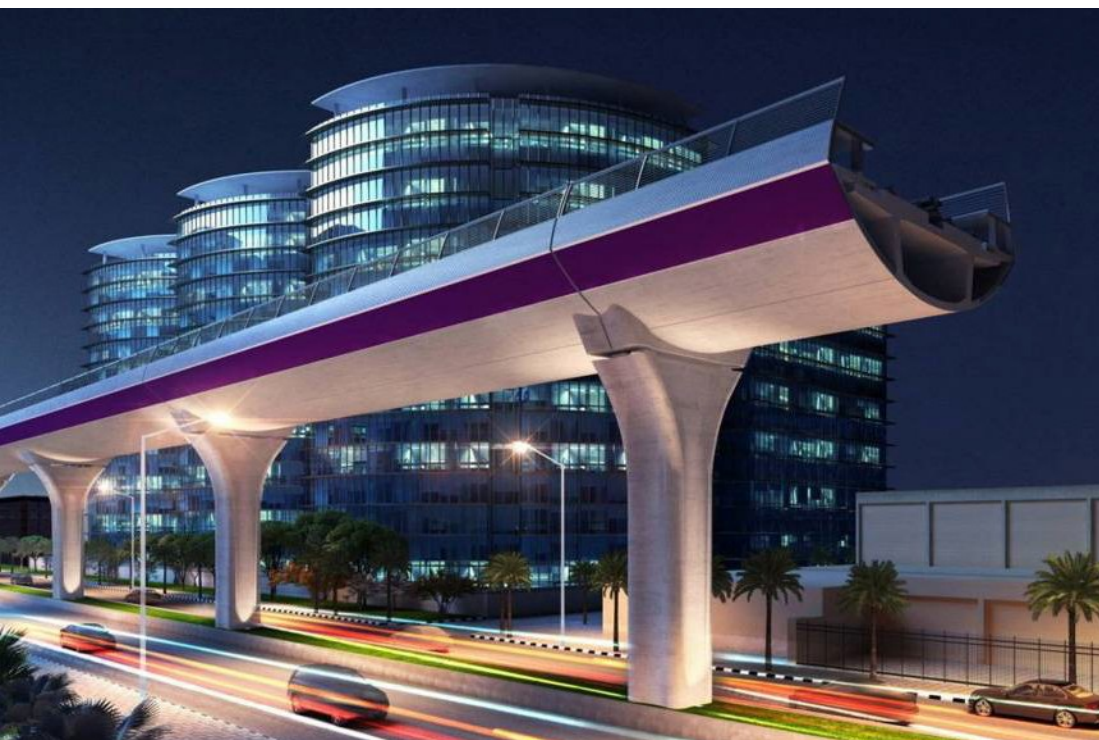
3J1 Station to 3K1 station and East Depot area (Riyadh)

Planning, Estimation, Quality and Quantity verification, Fixing Steel Reinforcement, Masonary and Formwork Installation, Placing Concrete and erecting false work and shuttering of Platform Slab, Retaining Walls Capping Beam with DOKA shuttering material supply.

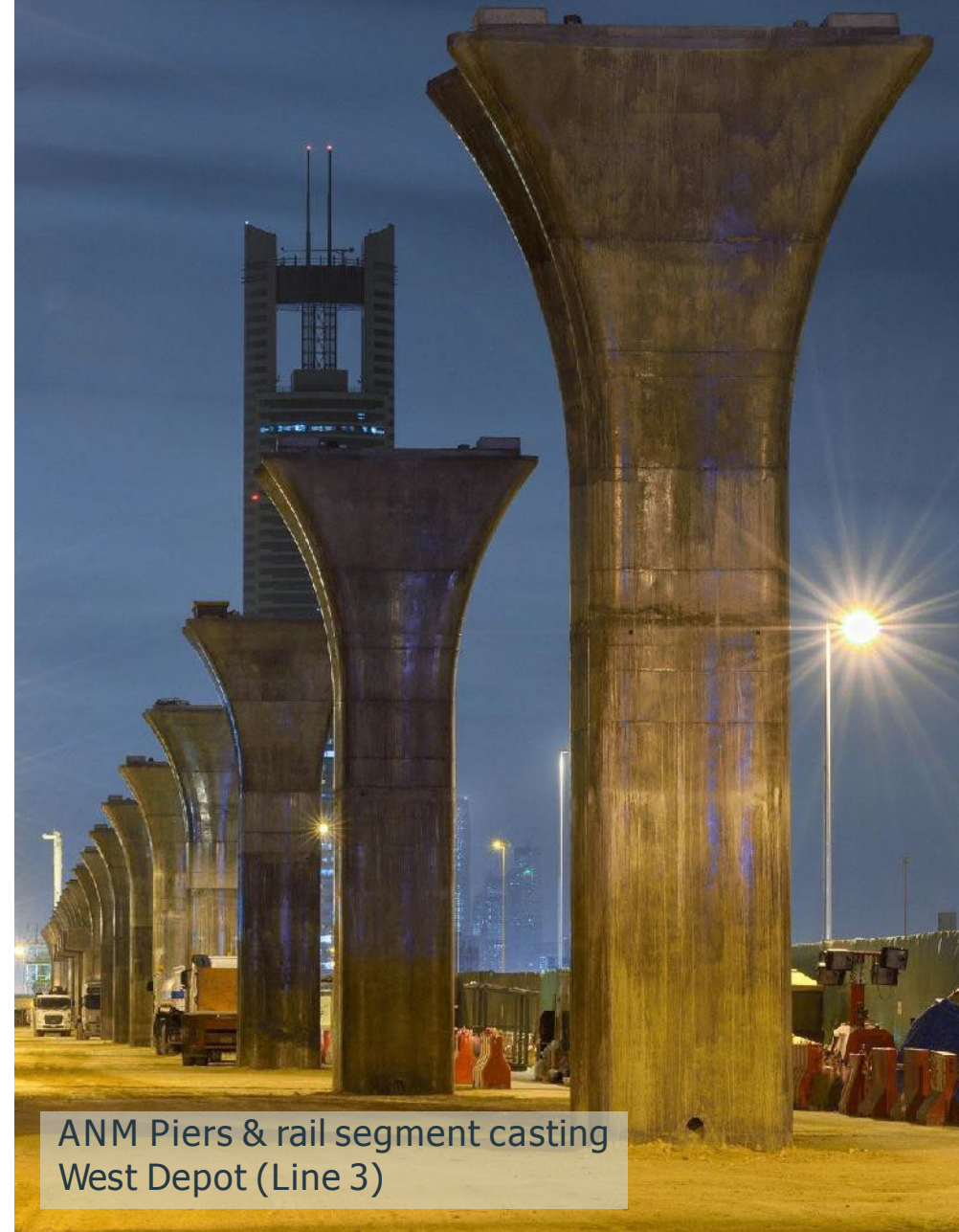
WEST DEPOT & EAST DEPOT

700 meters length
60 meters length





& PREFCASTING & INSTALLATION



ANM Piers & rail segment casting
West Depot (Line 3)



2.ANM Precast Yard - West Depot (On Makkah Road, Riyadh)

Planning, Estimation, Quality and Quantity verification, Fixing Steel Reinforcement, Masonry and Formwork Installation, Placing Concrete and erecting false work and shuttering of Precast Segments - Piers, Precast Template, Match-Cast "Perfect-Fit Joint", Match-Cast Pier Segments, Precast Inverted T-Cap, Pretensioned or Post-Tensioned.

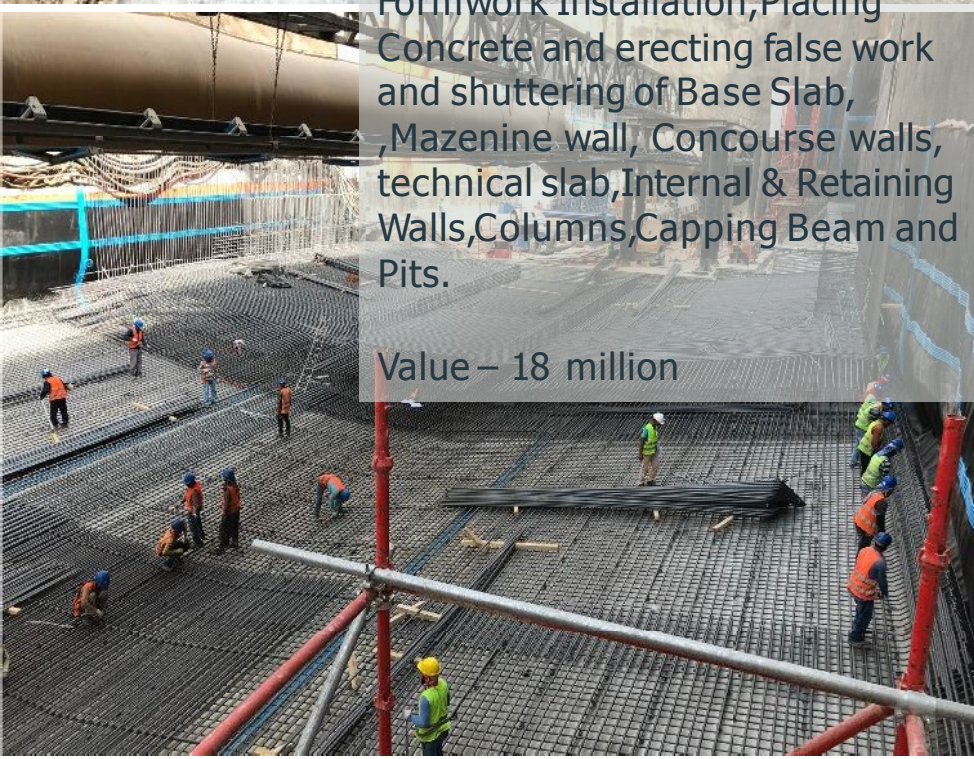
Value – 9 million




3E5 Deep Under Ground Station
(Near Sanniyah Gadeem, Madina
Munawara Road, Riyadh)

Planning, Estimation, Quality and
Quantity verification, Fixing Steel
Reinforcement, Masonry and
Formwork Installation, Placing
Concrete and erecting false work
and shuttering of Base Slab,
, Mazenine wall, Concourse walls,
technical slab, Internal & Retaining
Walls, Columns, Capping Beam and
Pits.

Value – 18 million



A photograph of a construction site for a deep underground station. The image shows a multi-level structure under construction, heavily encased in a complex network of yellow and grey metal scaffolding. A red concrete pump arm extends from the top left, pouring concrete into a formwork. Several construction workers in safety gear are visible on different levels of the structure. The sky is blue with some clouds.

3.3E6 Deep Under Ground Station (Near Saudi Railway Organisation, Riyadh)

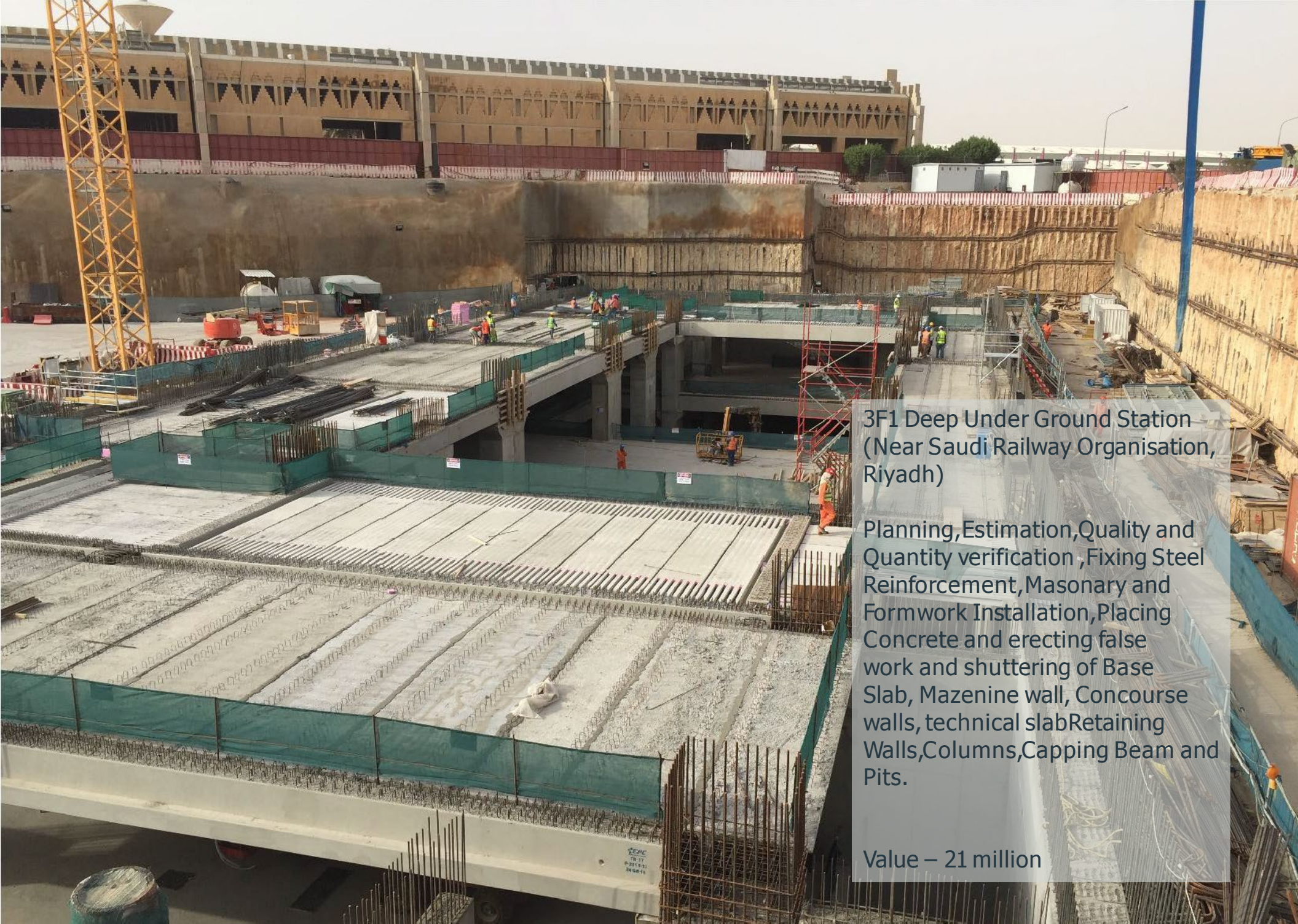
Planning, Estimation, Quality and Quantity verification, Fixing Steel Reinforcement, Masonry and Formwork Installation, Placing Concrete and erecting false work and shuttering of Base Slab, Mazenine wall, Concourse walls, technical slab, Internal & Retaining Walls, Columns, Capping Beam and Pits.

Value – 18 million



& CIVIL/STRUCTURAL PROCESSES





3F1 Deep Under Ground Station
(Near Saudi Railway Organisation,
Riyadh)

Planning, Estimation, Quality and
Quantity verification, Fixing Steel
Reinforcement, Masonry and
Formwork Installation, Placing
Concrete and erecting false
work and shuttering of Base
Slab, Mazenine wall, Concourse
walls, technical slab Retaining
Walls, Columns, Capping Beam and
Pits.

Value – 21 million



& EAST/WEST DEPOT

ANM East Depot (On Makkah Road, Riyadh)

Buildings ABCDE.

Planning, Estimation, Quality and Quantity verification, Fixing Steel Reinforcement, Masonry and Formwork Installation, Placing Concrete and erecting false work and shuttering of Precast Segments - Piers, Precast Template, Match-Cast "Perfect-Fit Joint", Match-Cast Pier Segments, Precast Inverted T-Cap, Pretensioned or Post Tensioned.



SOUTHERN CUT AND COVER – EXPOLINK 2020

Project Brief: Tail end of the tunnel for Metro route to Expo center. Located in DIP just in front of NMC Royal Hospital. The purpose of the section was to connect the metro from underground to the elevated viaduct section above the ground. The works included earth works, soil retaining structures such as D-Walls and sheet piles, Prop and Waller beams to hold the D-Walls and Base slabs for the tracks of trains. The total Quantity of Steel used was around 5000 tons and the quantum of concrete casted was around 10000 m³.

Project Cost: AEDs 10 millions

Project Client: RTA/Expolink2020

Project Consultants: Parsons Systra JV

Status: Completed



ANNEX TO STATION R-72

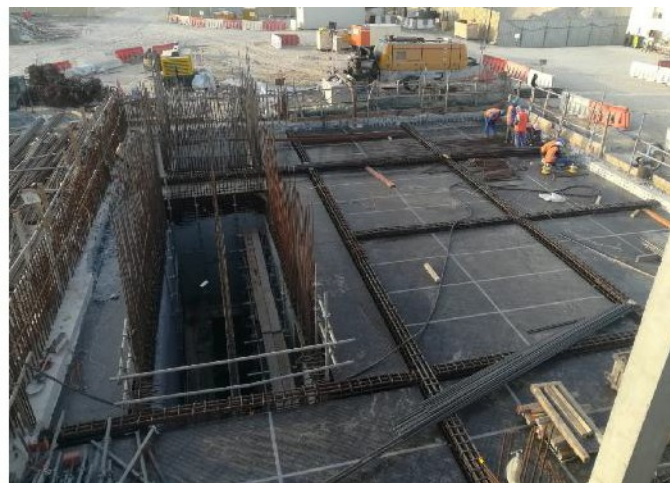
Project Brief: Situated at the head of tunnel section for Metro route to Expo center. Located in Discovery Garden just adjacent to Sheikh Muhammed Bin Zayed Road. This building serves as an Emergency Exit as well as Pressure Control Station. It was a very specialized job where pressure control machines were to be placed at different levels and locations. Survey precision was highly required while casting since beams and columns were acting as the foundation for machines.

Project Cost: AEDs 2.5 millions

Project Client: RTA/Expolink2020

Project Consultants: Parsons Systra JV

Status: In progress



SOUTHERN ABUTMENT

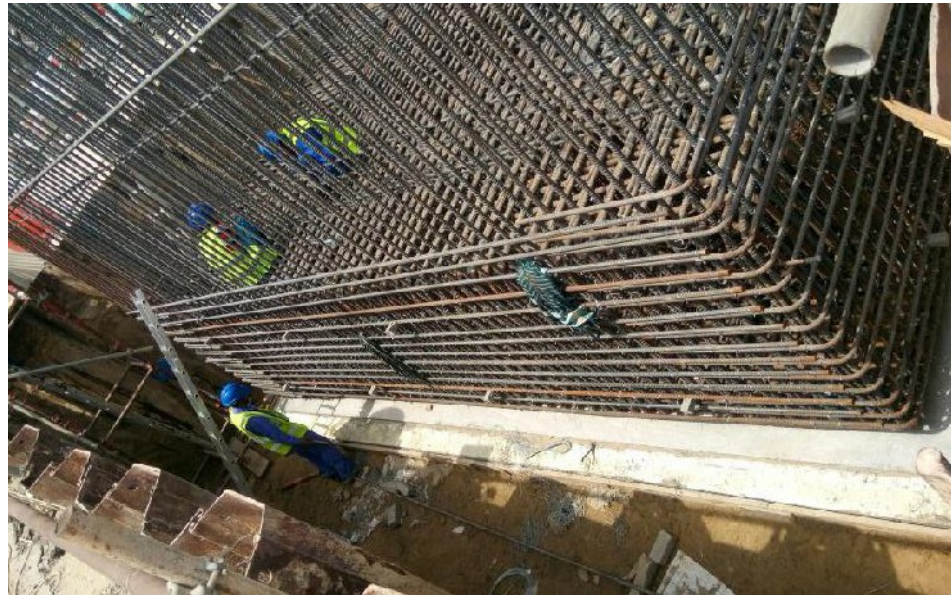
Project Brief: Located at the start of Viaduct section after Southern Cut and Cover. The purpose of this structure was to support the approach slab and allow for the mass fill in the transition area. It was designed to support vertical as well as lateral loads. The structure was mainly RCC with a mass fill of lean concrete in the middle.

Project Cost: AEDs 4 millions

Project Client: RTA/Expolink2020

Project Consultants: Parsons Systra JV

Status: Completed



DC TIE-IN SWITCHGEAR ROOM

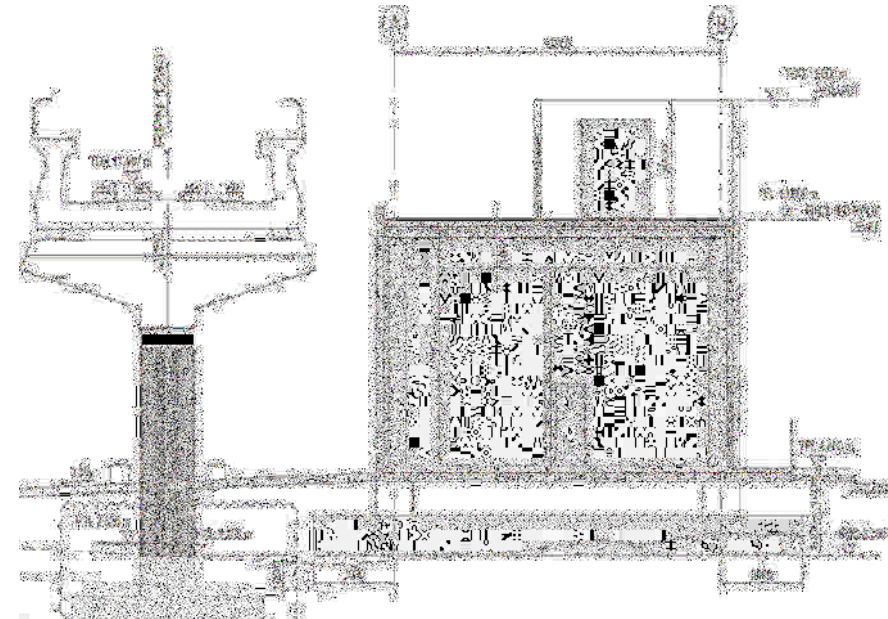
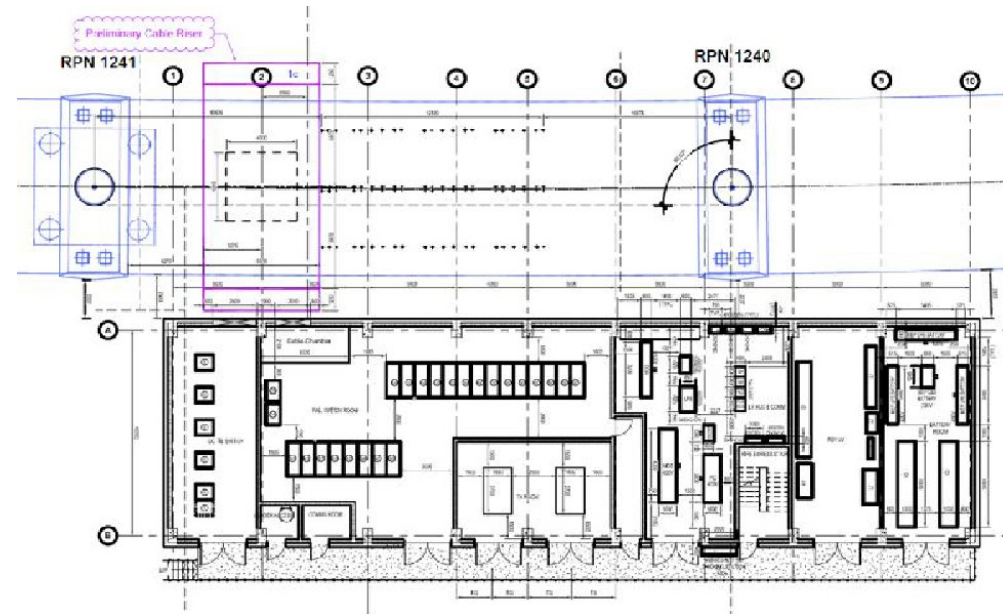
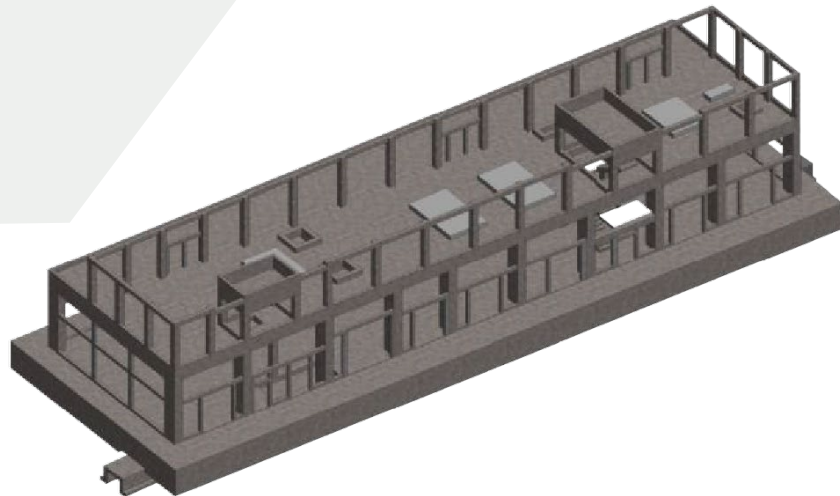
Project Brief: G+ 1 building located right at the start of the project, just by the side of Sheikh Zayed Road near Nakheel Harbour and Tower Metro Station. The building served as the control room for the trains. All switch gear controls were to be installed in that building. Our scope of work was Civil Works for the building as well as to prepare the duct banks for the cables which were to be connected to the metro tracks. The total Build up area of the building was 1200 sqm.

Project Cost: AEDs 2 millions

Project Client: RTA/Expolink2020

Project Consultants: Parsons Systra JV

Status: Completed





1. FOUNDATION AND BOTTOM SLAB WORK



2. COLUMNS

EXPOSITE - CAST IN-SITU DECKWORK

Project Brief: Scope of work for Zenith was to cast 96 meters long and 18 meters wide elevated deck for Dubai Metro Track leading to Expo Station. This job was very stringent as it included special access approval for contractor to work in EXPO-2020 area. Where only prone companies could work for the assigned jobs. The deck was scheduled to cast in 60 days but Zenith with its tireless workers casted it in merely 40 days. Such of our works bring applaud to our strength to perform well in a targeted and quality based jobs.

Project Cost: AEDs 1 millions

Project Client: RTA/Expolink2020

Project Consultants: Parsons Systra JV

Status: Completed



POCKET TRACK

Project Brief: 105m long and 20m wide track for Dubai Metro. The purpose of this track is to allow the trains to park in case of emergency. The works included laying track leading to R-71 elevated station in Discovery Garden area. It was casted in a very tight schedule as this one was on a very busy road and road blockage was restricted in working hours. Zenith managed all constraints swiftly and delivered the track work on time.

Project Cost: AEDs 1.5 millions

Project Client: RTA/Expolink2020

Project Consultants: Parsons Systra JV

Status: Completed





17

LIST OF ONGOING/
COMPLETED PROJECT







شهادة اشتراك Membership Certificate

غرفة الرياض
Riyadh Chamber

Membership No. :	62395	62395	رقم العضوية الموحد :
Date of Issue:	24/02/2014	2014/02/24	تاريخ الاصدار:
Membership Class :	Forth	الرابعة	درجة العضوية :
Riyadh Chamber Certifies			تشهد الغرفة التجارية الصناعية بالرياض بأن موسسة المباني الفضية للمقاولات
Commercial Registration No.	1010397378	1010397378	مقيدة بالسجل التجاري / الترخيص رقم :
Certificate Expires on	23/06/2023	2023/06/23	ينتهي سريان هذه الشهادة في




الخدمات الإلكترونية لغرفة الرياض - بوابة أعمال © E-Services Riyadh Chamber

920004565

- يلزم التحقق من الوثيقة عبر الرابط <https://mybusiness.chamber.sa> ، أو تطبيق (سند)
- للأجهزة المحمولة أو الرقم الموحد دون ادنى مسؤولية على الغرفة عن محتوى الوثيقة.
- تعد هذه الورقة من الوثائق الالكترونية لغرفة الرياض، ويمنع تعديلها اول محاولة العبث بها وتصبح لاغية حال محاولة تعديلها وتعرض صاحبها للملاحقة القانونية.

18

CERTIFICATES



Silver Building contracting has Jointly Venture with Saudik in Saudi Arabia and currently doing projects across Arabia as a JV.

Project Key are committed to the work offered to us and to complete it in full excellence we are open for Joint Venture with companies of same interest.